

SKIN & COAT TREAT

Dog & Cat – For all Life Stages

Recipe Claims



Added Omega 3 Supplement

Provides Omega 3 essential fatty acids to help support gloss & softness.



Contains EPA & DHA

To help reduce the build up and production of dandruff by maintaining cellular structure and 'locking in' moisture.



Contains Zinc & Biotin

This recipe contains zinc & biotin which can help in maintaining a healthy skin and shiny coat.



No Added Grain

This recipe is designed to be suitable for those with grain intolerance / sensitivity.



Added Vitamins & Minerals

Added Vitamins & Minerals which are essential for a pet's overall health.



No Added Artificial Colours & Preservatives

Naturally preserved using rosemary extract.



Why Skin & Coat?

The skin and coat form the single largest organ of a pet's body and is the first protective barrier from the outside. This recipe has been formulated to help support healthy skin & a shiny coat.



Also available:



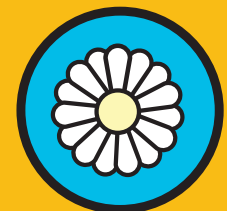
Digestive



Dental



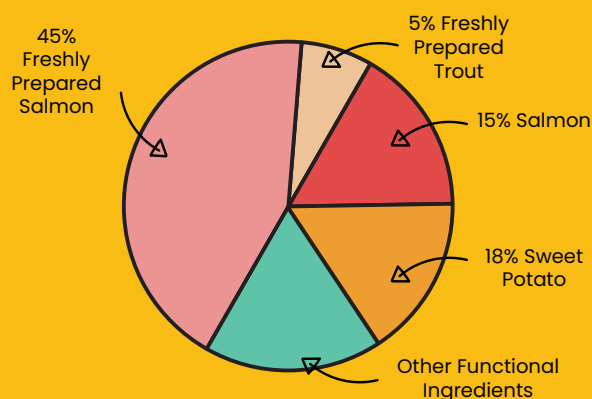
Immune



Calming

Composition

Freshly Prepared Salmon 45%, Sweet Potato 18%, Dried Salmon 8%, Salmon Oil 7%, Potato, Peas, Freshly Prepared Trout 5%, Lucerne, Dried Egg, Minerals, Omega 3 Supplement, Algae



Analytical Constituents

Crude Protein	25%
Crude Fat	19%
Crude Fibre	3%
Crude Ash	8%
Moisture	8%
NFE	37%
Metabolisable Energy	393 kcal/100g
Omega 6 Fatty Acids	1.6%
Omega 3 Fatty Acids	5.3%

Nutritional additives per kg

Vitamins: Vitamin A 15,000 IU, Vitamin D3 2,000 IU, Vitamin E 670 IU, Biotin 0.14 mg

Trace Elements: Zinc (Zinc Sulphate Monohydrate) 155 mg, Iron (Iron (II) Sulphate Monohydrate) 50 mg, Manganese (Manganous Sulphate Monohydrate) 35 mg, Iodine (Calcium Iodate Anhydrous) 1 mg

Bag Types

- Box of 25 x 70g pouches
- 15kg Clear Bag
- Up to 18 month shelf life

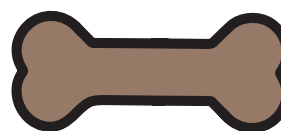


70g White Pouch

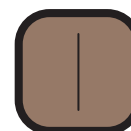
15kg Clear Bag

Kibble size

- Optimal kibble size and shape for dogs and cats.
- A crunchy kibble texture



15mm
(+/- 0.5mm)



10mm
(+/- 0.5mm)

Feeding Guide

This complementary feed can be given responsibly to dogs and cats anytime as a treat or reward.

Important: The information provided in this document is GA Pet Food Partners Ltd interpretation of Regulation No 767/2009 including amending Regulations 2017/2279 and 2018/1903. As with all legislation only courts can decide on the correct interpretation of the law. We would advise that you always seek legal advice when creating/printing new packaging, leaflets or websites. The statutory Analytical Constituents declaration parameters (i.e. Crude Protein, Crude Fat, Crude Fibre, Crude Ash) may be used for declaration purposes along with Moisture. Other parameters are intended as a guide and in order to declare extra figures we suggest that analysis work is carried out to confirm levels more precisely. Formulation updates: As information becomes available and in order to continually meet statutory analytical constituent declarations, formulations may have to be adapted to account for raw material variation and availability. There may also be other reasons outside of our immediate control (including but not limited to force majeure events) which warrant the change of a formulation to improve its suitability.