

# DIGESTIVE TREAT

**Dog & Cat – For all Life Stages**

## Recipe Claims



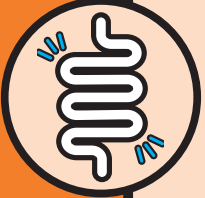
### **Contains Prebiotics MOS and FOS**

MOS (Mannanooligosaccharides) & FOS (Fructooligosaccharides) may help to support the growth of healthy gut bacteria and enhance the absorption of nutrients.



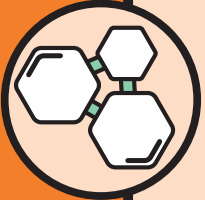
### **Added Probiotic**

To help stabilise and stimulate the growth of advantageous gut flora.



### **Contains High Fibre Level**

To help support gut movement and to promote a firmer stool consistency.



### **Contains Cellulose**

May help maintain a healthy gut transit time and aid weight control.



### **Added Nucleotides**

Added nucleotides – to help aid gastrointestinal cell renewal.



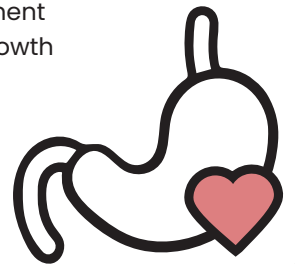
### **Added Vitamins & Minerals**

Added Vitamins & Minerals which are essential for a pet's overall health.

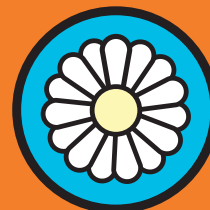


## Why Digestive?

Good digestion is crucial for a pet's health so they can obtain all the nutrients they need from their food. This recipe has been formulated to help promote healthy gut movement and support the growth of good bacteria, both of which are required to help support gastrointestinal health.



## Also available:



**Calming**



**Immune**



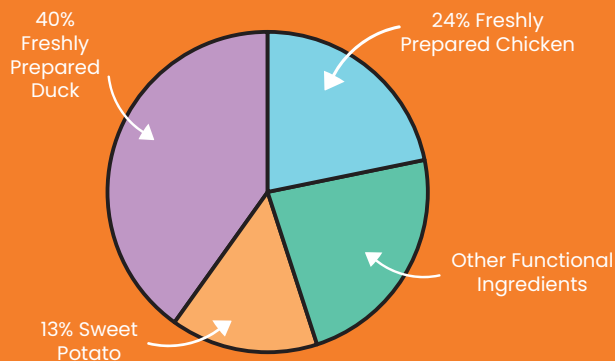
**Skin & Coat**



**Dental**

## Composition

Freshly Prepared Duck 40%, Freshly Prepared Chicken 24%, Sweet Potato 13%, Potato, Peas, Vegetable Protein, Minerals, Chicken Gravy 1%, Nucleotides 1%, Cellulose 1%, Omega 3 Supplement, Fructooligosaccharides (FOS, 4,807 mg/kg), Beta Glucans, Mannanooligosaccharides (MOS, 1,201 mg/kg), Camomile, Lavender



## Analytical Constituents

Crude Protein .....	25%
Crude Fat .....	16%
Crude Fibre .....	4.5%
Crude Ash .....	7.5%
Moisture .....	8%
NFE .....	39%
Metabolisable Energy .....	371 kcal/100g
Omega 6 Fatty Acids .....	2%
Omega 3 Fatty Acids .....	0.5%

## Nutritional additives per kg

Vitamins: Vitamin A 15,000 IU, Vitamin D3 2,000 IU, Vitamin E 95 IU

Trace Elements: Zinc (Zinc Sulphate Monohydrate) 85 mg, Iron (Iron (II) Sulphate Monohydrate) 50 mg, Manganese (Manganous Sulphate Monohydrate) 35 mg, Copper (Copper (II) Sulphate Pentahydrate) 15 mg, Iodine (Calcium Iodate Anhydrous) 1.7 mg, Selenium (Sodium Selenite) 0.3 mg

Gut Flora Stabilisers: Enterococcus faecium DSM 10663/ NCIMB 10415 1,000,000,000 cfu

## Bag Types

- Box of 25 x 70g pouches
- 15kg Clear Bag
- Up to 18 month shelf life

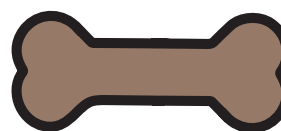


70g White Pouch

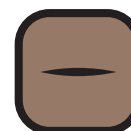
15kg Clear Bag

## Kibble size

- Optimal kibble size and shape for dogs and cats.
- A crunchy kibble texture



15.5mm  
(+/- 0.5mm)



10mm  
(+/- 0.5mm)

## Feeding Guide

This complementary feed can be given responsibly to dogs and cats anytime as a treat or reward.

Important: The information provided in this document is GA Pet Food Partners Ltd interpretation of Regulation No 767/2009 including amending Regulations 2017/2279 and 2018/1903. As with all legislation only courts can decide on the correct interpretation of the law. We would advise that you always seek legal advice when creating/printing new packaging, leaflets or websites. The statutory Analytical Constituents declaration parameters (i.e. Crude Protein, Crude Fat, Crude Fibre, Crude Ash) may be used for declaration purposes along with Moisture. Other parameters are intended as a guide and in order to declare extra figures we suggest that analysis work is carried out to confirm levels more precisely. Formulation updates: As information becomes available and in order to continually meet statutory analytical constituent declarations, formulations may have to be adapted to account for raw material variation and availability. There may also be other reasons outside of our immediate control (including but not limited to force majeure events) which warrant the change of a formulation to improve its suitability.