

CALMING TREAT

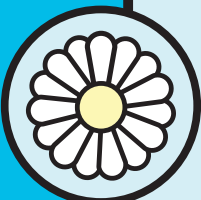
Dog & Cat – For all Life Stages

Recipe Claims



Added Lavender

Olfactory stimulation – thought to encourage behaviours suggestive of relaxation.



Added Camomile

Camomile and Lavender are thought to naturally calm and relax the pet and Camomile is also thought to help calm an upset stomach.



Added Probiotic

To help stabilise and stimulate the growth of advantageous gut flora.



No Added Grain

Some pets are intolerant to grains, which may cause skin irritation, poor health or digestive discomfort which can cause anxiety and stress reactions. This recipe is formulated to be Grain Free.



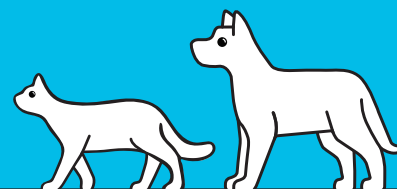
Added Nucleotides

Added nucleotides – essential for the renewal of cells. This also helps support all round health and well-being.



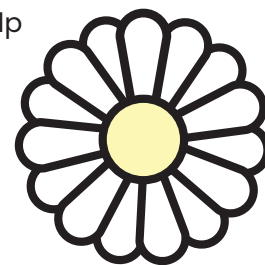
Added Vitamins & Minerals

Added Vitamins & Minerals which are essential for a pet's overall health.

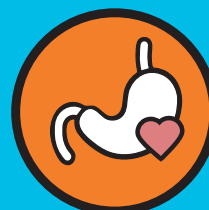


Why Calming?

Pets can be susceptible to stresses and anxiety. This can be due to biological or psychological reasons. This recipe has been formulated to help alleviate stress, anxiety and aid digestion.



Also available:



Digestive



Immune



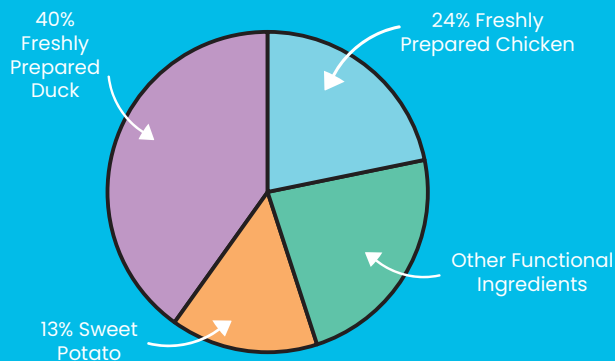
Skin & Coat



Dental

Composition

Freshly Prepared Duck 40%, Freshly Prepared Chicken 24%, Sweet Potato 13%, Potato, Peas, Vegetable Protein, Minerals, Chicken Gravy 1%, Nucleotides 1%, Cellulose, Omega 3 Supplement, Fructooligosaccharides (FOS), Beta Glucans, Mannanooligosaccharides (MOS), Camomile (50 mg/kg), Lavender (50 mg/kg)



Analytical Constituents

Crude Protein	25%
Crude Fat	16%
Crude Fibre	4.5%
Crude Ash	7.5%
Moisture	8%
NFE	39%
Metabolisable Energy	371 kcal/100g
Omega 6 Fatty Acids	2%
Omega 3 Fatty Acids	0.5%

Nutritional additives per kg

Vitamins: Vitamin A 15,000 IU, Vitamin D3 2,000 IU, Vitamin E 95 IU

Trace Elements: Zinc (Zinc Sulphate Monohydrate) 85 mg, Iron (Iron (II) Sulphate Monohydrate) 50 mg, Manganese (Manganous Sulphate Monohydrate) 35 mg, Copper (Copper (II) Sulphate Pentahydrate) 15 mg, Iodine (Calcium Iodate Anhydrous) 1.7 mg, Selenium (Sodium Selenite) 0.3 mg

Gut Flora Stabilisers: Enterococcus faecium DSM 10663/ NCIMB 10415 1,000,000,000 cfu

Bag Types

- Box of 25 x 70g pouches
- 15kg Clear Bag
- Up to 18 month shelf life

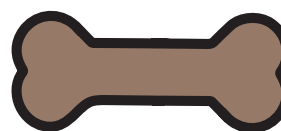


70g White Pouch

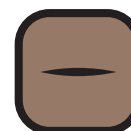
15kg Clear Bag

Kibble size

- Optimal kibble size and shape for dogs and cats.
- A crunchy kibble texture



15.5mm
(+/- 0.5mm)



10mm
(+/- 0.5mm)

Feeding Guide

This complementary feed can be given responsibly to dogs and cats anytime as a treat or reward.

Important: The information provided in this document is GA Pet Food Partners Ltd interpretation of Regulation No 767/2009 including amending Regulations 2017/2279 and 2018/1903. As with all legislation only courts can decide on the correct interpretation of the law. We would advise that you always seek legal advice when creating/printing new packaging, leaflets or websites. The statutory Analytical Constituents declaration parameters (i.e. Crude Protein, Crude Fat, Crude Fibre, Crude Ash) may be used for declaration purposes along with Moisture. Other parameters are intended as a guide and in order to declare extra figures we suggest that analysis work is carried out to confirm levels more precisely. Formulation updates: As information becomes available and in order to continually meet statutory analytical constituent declarations, formulations may have to be adapted to account for raw material variation and availability. There may also be other reasons outside of our immediate control (including but not limited to force majeure events) which warrant the change of a formulation to improve its suitability.